



www.SafeHarborEnv.com • October 12, 2009 • No. 14

OUTER CAPE ENVIRONMENTAL AWARENESS NEWSLETTER

This e-newsletter was created by Safe Harbor to encourage collaborative partnerships between Outer Cape towns, groups, and individuals seeking innovative solutions to shared environmental issues. Collaborative efforts save financial as well as natural resources. We would like to thank Whitney Ward of London, England for her generous contribution of effort and talent in the production of our newsletter.

Thank you to our readers for supporting our efforts to protect natural resources through education.

—Gordon Peabody, *Editor*

PROVINCETOWN PIER GETS GREENER WITH UNIQUE WIND TURBINE

Safe Harbor advocates for Verticle Axis Wind Turbines (VAT's) for residential use. Two things that we share on Cape Cod are some of the highest electric rates in the country and a lot of wind. Wouldn't it be great if one could cancel the other? VAT's may not be completely ready this fall but we applaud the Town of Provincetown for installing this turbine. Verticle axis turbines only have one moving part and should be considered as a component in hybrid, home energy systems. As for the detractors of VAT's, we are reminded of the three reasons the first automobile would never succeed: it was ugly; it broke down all the time; it was loud and scared the horses! Carbon had it's birthing period to make improvements. We believe renewable energy systems should be afforded a birthing period as well. Our efforts to de carbonize won't be defined by our mistakes but by our successes, because we can correct our mistakes. Check out some new energy concepts on our Educational Initiatives web page, under hybrid energy systems. www.safeharborenv.com



CONCRETE BOX

Innovative technique reduces ground water contamination in sensitive areas. Build a plastic lined, washout/overpour box using concrete form components. This will meet or exceed performance standards for ground water protection. The box can be dismantled and the concrete broken up to use for dry wells to control storm water.

WELLFLEET TRANSFER STATION GETS GREENER

Contractors and property owners are benefiting from Wellfleet's innovative recycle/reuse program for clean, untreated wood. The community and contractors have access to the wood recycling area to drop off or pick up wood for construction or burning, between 1-4 Pm every Friday, or by calling 508-349-0308. Savings in disposal and heating costs recycle finances within the community.

(Left: Mark Vincent, DPW worker; Center: Hillary Greenberg, Wellfleet Health and Conservation Agent; Right: Paul Lindberg, DPW worker.)



SAFE HARBOR BECOMES A MEMBER OF MASSACHUSETTS OCEAN PARTNERSHIP

Ocean resources in Massachusetts are held as a public trust. Every resident has a stake in their future management. We believe in interdisciplinary collaboration as a pathway to natural resource management. Safe Harbor believes in the values of this partnership as a means of avoiding conflict in multiple use resource areas.

www.massococeanpartnership.org



"DIRTY DOZEN"

Safe harbor's newest publication addresses Cape Cod's invasive vegetation. We have chosen 13 particular species, which are displacing our native vegetation. Invasive vegetation has aggressive growth rates which allow it to out compete slower growing native vegetation, for sunlight, moisture and nutrients. The loss of habitat stresses native animals. We cover invasive ecology, identification and management techniques. Safe Harbor advocates incineration of removed invasives to control spread of seeds. Keep them out of compost piles! Check out this downloadable publication on our website after October 21, when it will be available as a pdf. www.safeharborenv.com



Beetle Battles Intensify

Pine borer beetles bore through lower trunks of local pines and leave identifying sap drips. The larvae feed on the inner, sap flow area of the tree. Branches and eventually entire trees die. Cutting down these standing dead trees solves one problem but may cause another. Infected trees that are cut and stacked or even chipped, may still infect additional trees. Safe Harbor advocates cutting and immediate burning or double chipping, when ever possible. Thanks to Deb Giza, local massage and body worker, for this research on Outer Cape fire regulations. for more info on these big beetles, check with Jennifer.forman-orth@state.ma.gov

Burning season (January 15-May 1st) regulations are dictated by state law. Your local town requires a burning permit, usually around \$10.00:

Brewster: 508-896-7109; Orleans: 508-255-0050; Eastham: 508-255-2324; Wellfleet: 508-349-3754; Truro: 508-487-7548; Provincetown: 508-487-0345



THE ALB, OR ASIAN LONGHORNED BEETLE,

has devastated central Massachusetts hardwoods. As these trees die, many are cut for firewood and shipped east or out of state. This practice has allowed these once obscure invasives to proliferate in new territories. Since these huge beetles bore into treetops and only emerge during a few weeks of the year, they are difficult to detect.

Controlling our firewood sources, learning to recognize these BIG insects and burning or double chipping infected trees are some of the ways to control infestation. Boring beetles have become an international problem with climate change providing access to new areas of forests.

www.massnrc.org/pests/pestFAQsheets/asianlonghorned.html

THE GOOD, THE BAD AND THE UGLY

Please Join us at a very Unique Environmental event to be held October 30 at 10 AM in Orleans MA.

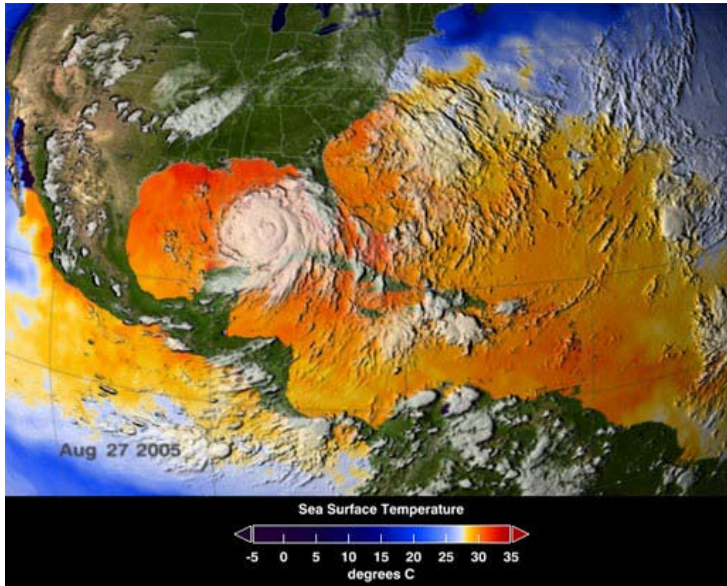
OCEAN newsletter is sponsoring this lunch event, for environmental professionals interested in a unique learning experience. In the informal setting at host Seth Wilkinson's farm, we will be presenting some of the most successful environmental projects in Cape Cod and AND some of the disasters. We believe a lot can be learned from both outcomes. Following lunch, there will be an opportunity for a field trip to an environmental site. This will be an off season, information rich event, intended for professionals in environmental and related fields. Order out lunches can be selected at 9:45 AM check in. Email dianasafeharbor@yahoo.com to get your directions to Seth's Farm or offer to make a brief presentation for this "Good, Bad and Ugly" event. We know everyone has a story!



OCEAN newsletter would like to thank Recovering Hearts of Provincetown for their generous donation to our newsletter.

OCEAN newsletter would like to congratulate Whitney Johnson on her recent marriage. We gave Whitney, who usually does our formatting and layout, this issue off as a honeymoon present.

OCEAN newsletter would like to thank Justine Ives for her creative contributions to the formatting and layout of OCEAN 14.



THE ROLE OF UNCERTAINTY IN CLIMATE CHANGE DECISIONS

The July issue (No. 70) of the Association of Massachusetts Wetlands Scientists Newsletter, published an article by Gordon Peabody on The Role of Uncertainty in Climate Change Decisions. The article takes a deeper look at the element of uncertainty that climate change scientists are incorporating into research, decisions and policy recommendations. If you're up to reading more, find the full article on our website's [Climate Change](#) page. For more information on AMWS, check out their website www.amws.org.

Safe Harbor's summer intern was Charles Post, who is studying Environmental Management at the University of California at Berkeley. We invited Charles to write a short article as part of his internship. We are sharing his article with our readers... Yes, he is also a surfer!

MANAGING MULTI-USE NATURAL RESOURCE AREAS BY CHARLES POST

A multi-use natural resource area can be defined as any land, which provides a use for man and also provides and sustains habitat and wildlife. Managing these multi-use natural resource areas can prove to be a daunting task if the proper steps and mitigations are not taken into account sufficiently.

Effective, cross-party management is necessary to neither degrade nor destroy the natural resource area of focus. Before work can begin, the biotic and abiotic elements within the resource area must be taken into account. Often times a project plan must be reassessed and reworked on more detailed levels. If alternative choices are not viewed on a present and future scale, in the fourth dimension of time, there is no way to foresee the impacts of decisions on the resource area.

Every interaction should also have an educational component. By integrating social considerations with ecology, a previously complex idea can be broken down into a more tangible form. Support can also be generated through the linkages of property owners and their land. This is especially true when property owners are included in discussions of alternatives. Holding community meetings generates a local perspective and begins to identify the process of choosing alternatives as "we" as opposed to "you". This removes the disconnect between parties.

These elements as well as maintaining clarity and ethical intentions, contribute to sustainable, effective management of a Multi-use Natural Resource project.

